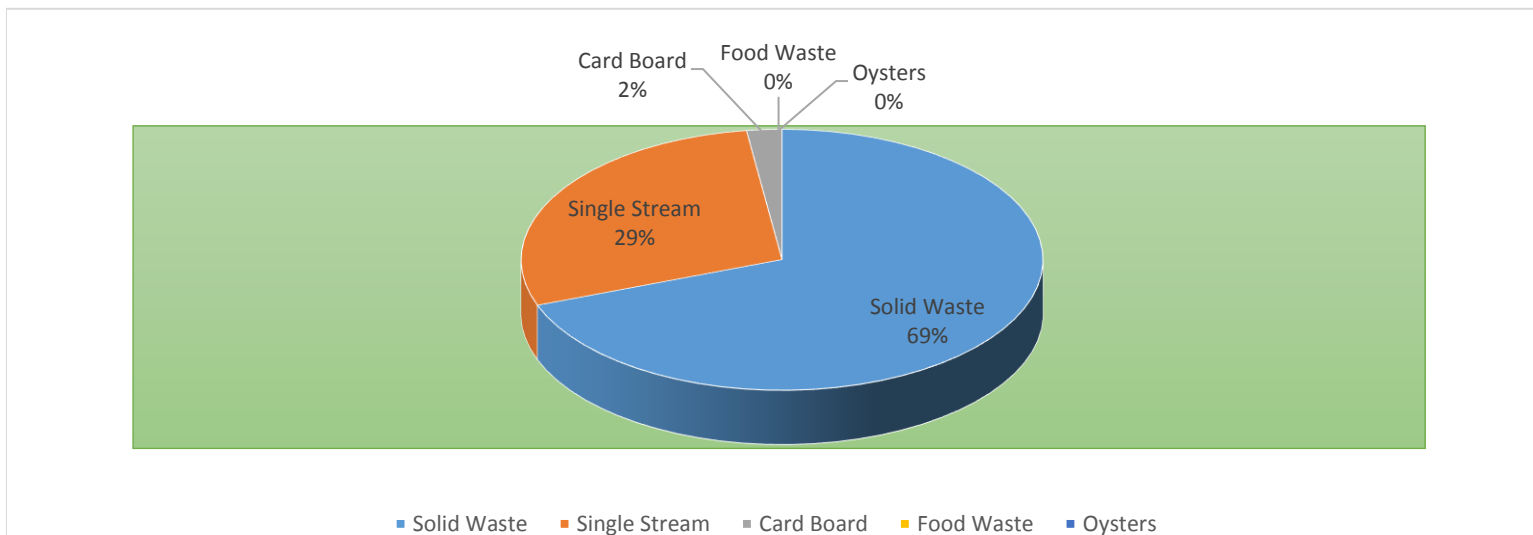
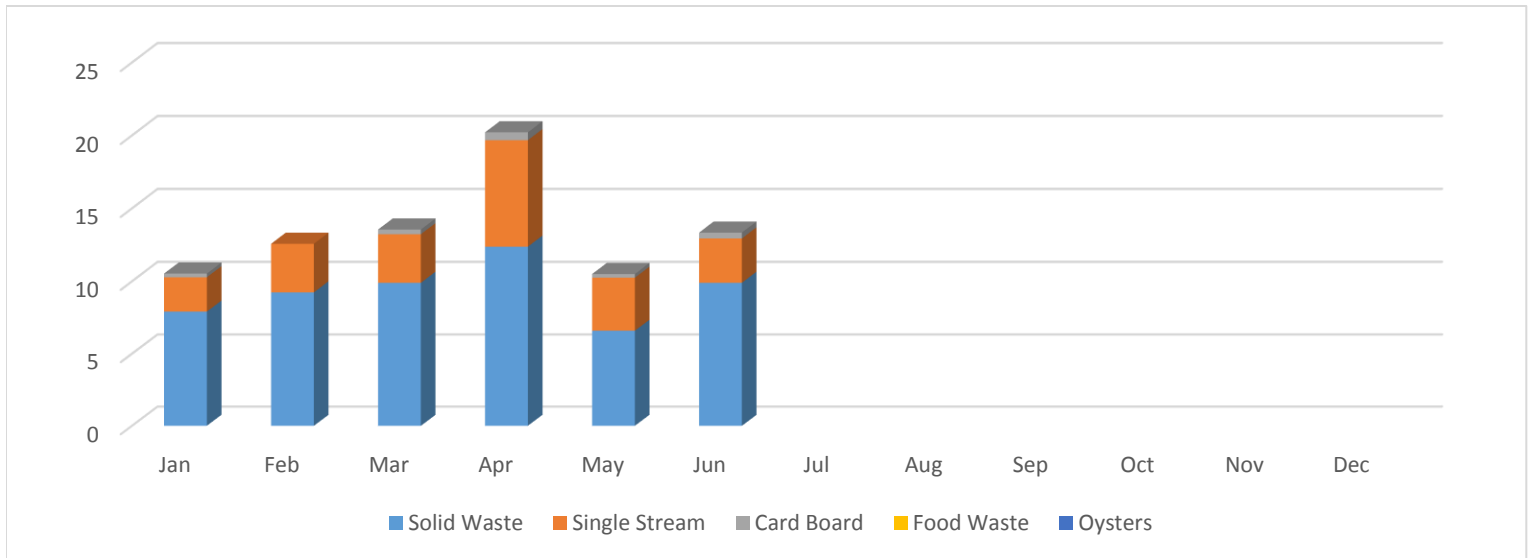


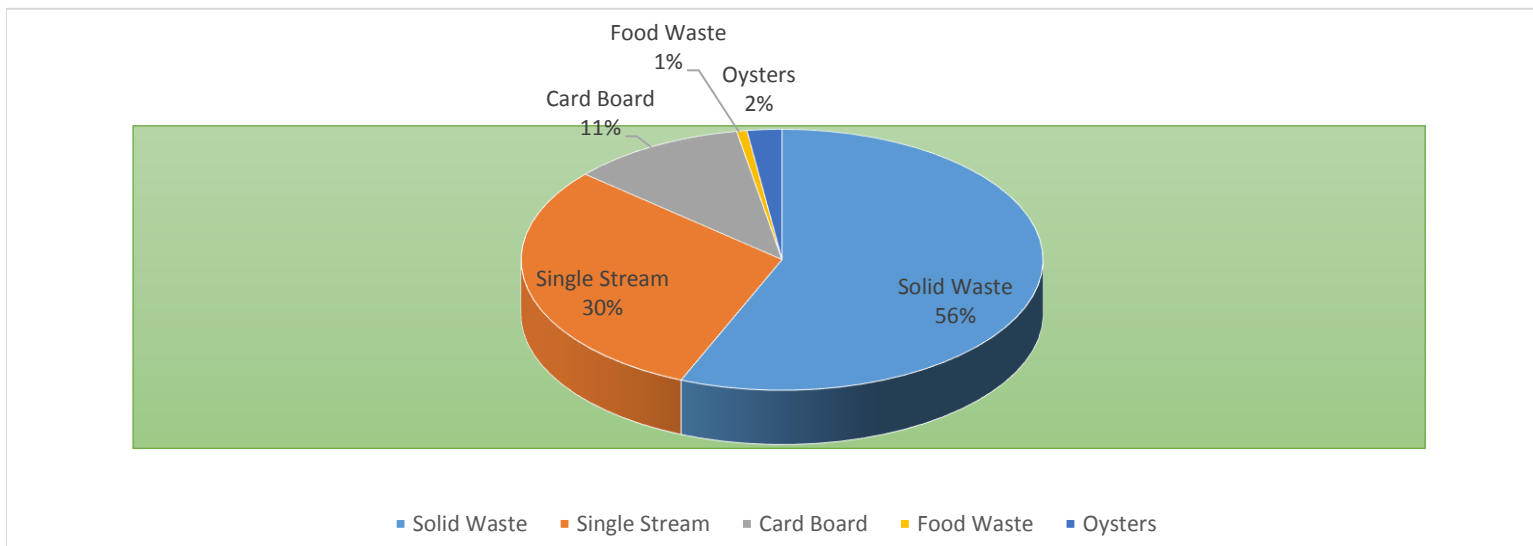
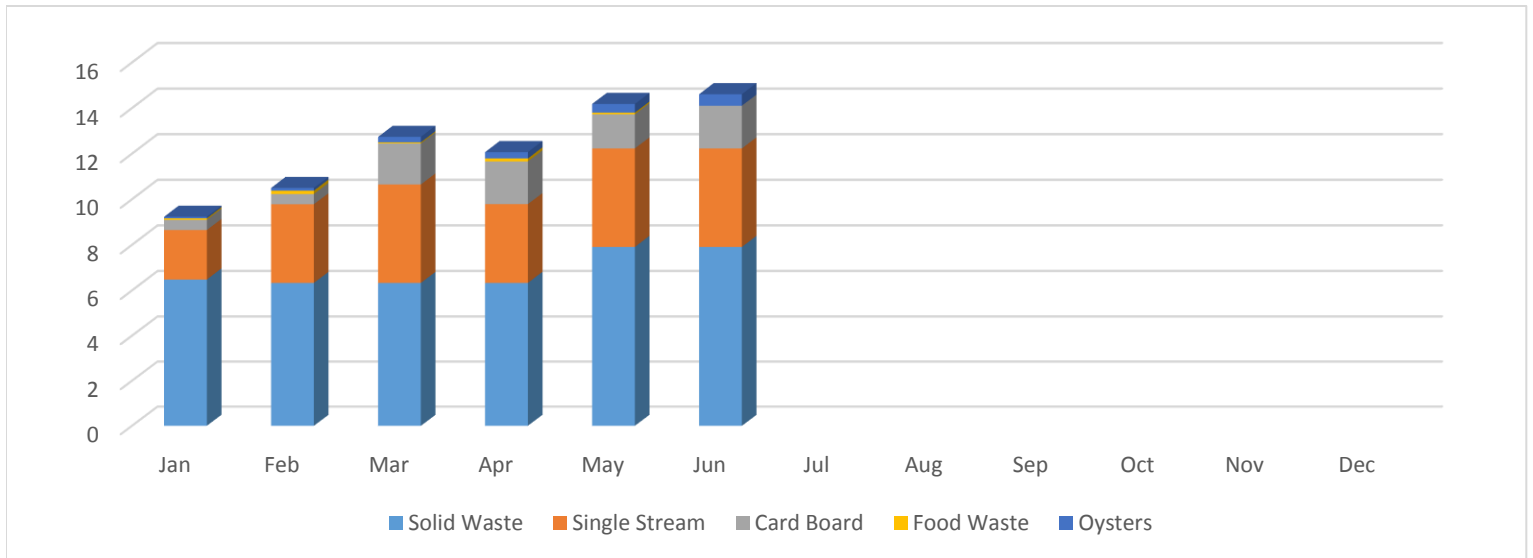
## The Inn at Harbourtown 2015

	Solid Waste	Single Stream	Card Board	Food Waste	Oysters	Total Tons
Jan	7.92	2.36	0.25			10.53
Feb	9.24	3.33				12.57
Mar	9.9	3.33	0.32			13.55
Apr	12.375	7.3	0.54			20.215
May	6.6	3.65	0.25			10.5
Jun	9.9	3.04	0.4			13.34
Jul						0
Aug						0
Sep						0
Oct						0
Nov						0
Dec						0
<b>Total Tons</b>	<b>55.935</b>	<b>23.01</b>	<b>1.76</b>	<b>0</b>	<b>0</b>	<b>80.705</b>



## Sea Pines Beach Club 2015

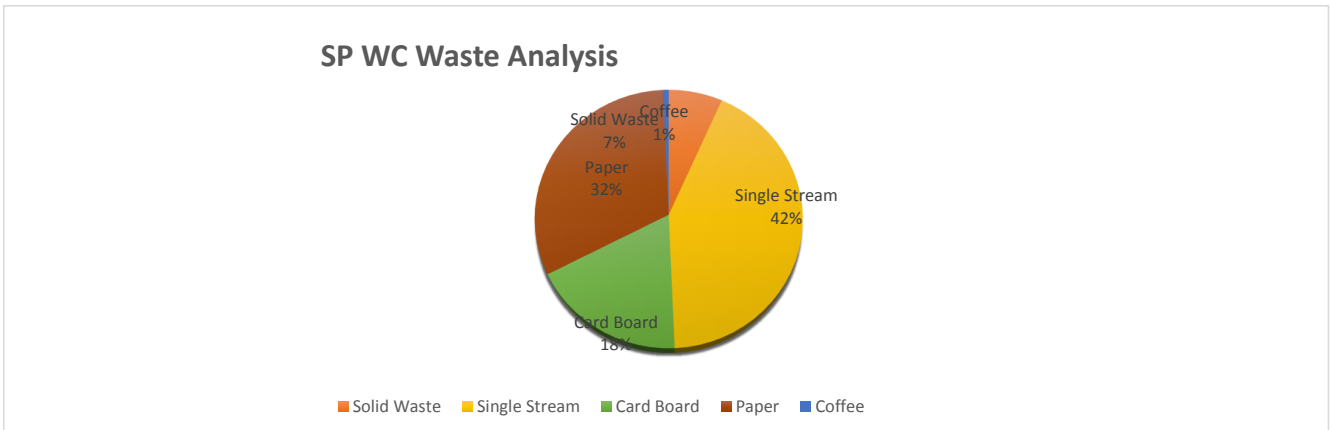
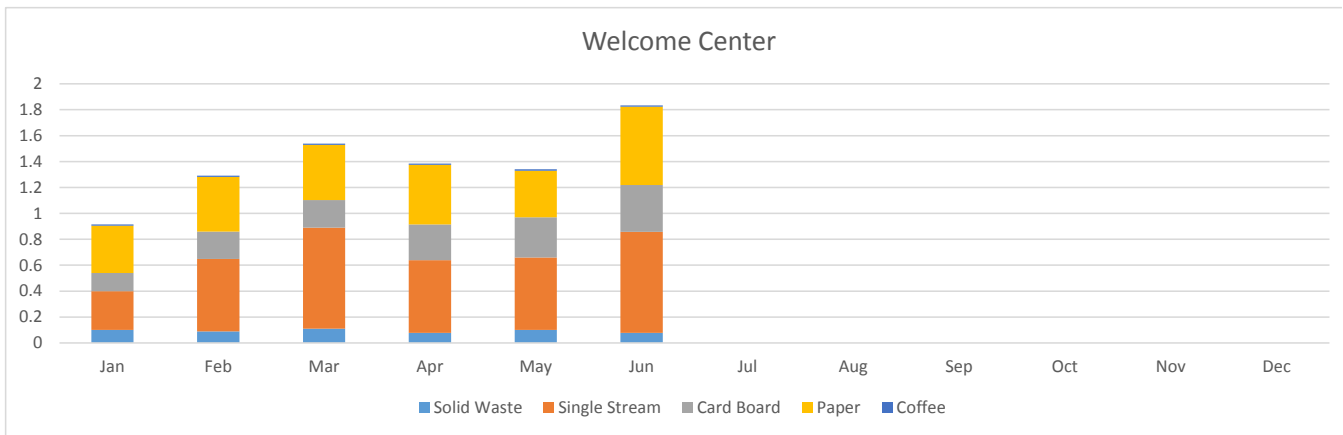
	Solid Waste	Single Stream	Card Board	Food Waste	Oysters	Total Tons
Jan	6.48	2.17	0.45	0.064	0.0665	9.2305
Feb	6.33	3.45	0.45	0.148	0.118	10.496
Mar	6.33	4.32	1.8	0.05	0.237	12.737
Apr	6.33	3.456	1.875	0.13	0.2775	12.0685
May	7.91	4.32	1.5	0.07	0.38	14.18
Jun	7.91	4.32	1.875	0	0.504	14.609
Jul						0
Aug						0
Sep						0
Oct						0
Nov						0
Dec						0
<b>Total Tons</b>	<b>41.29</b>	<b>22.036</b>	<b>7.95</b>	<b>0.462</b>	<b>1.583</b>	<b>73.321</b>



Solid Waste Logs 2015

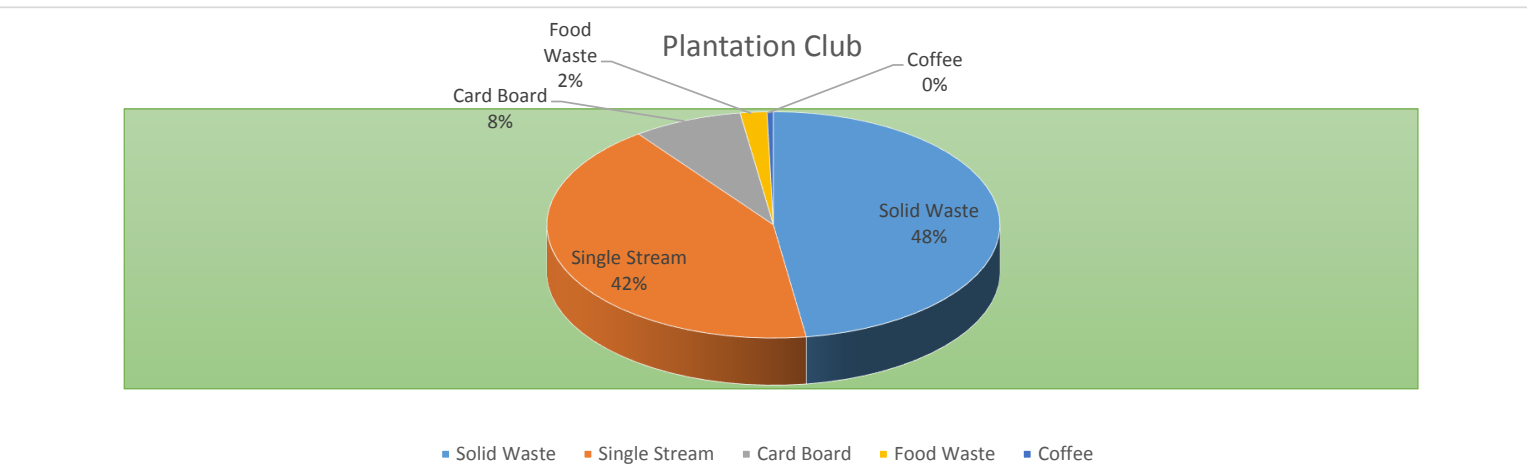
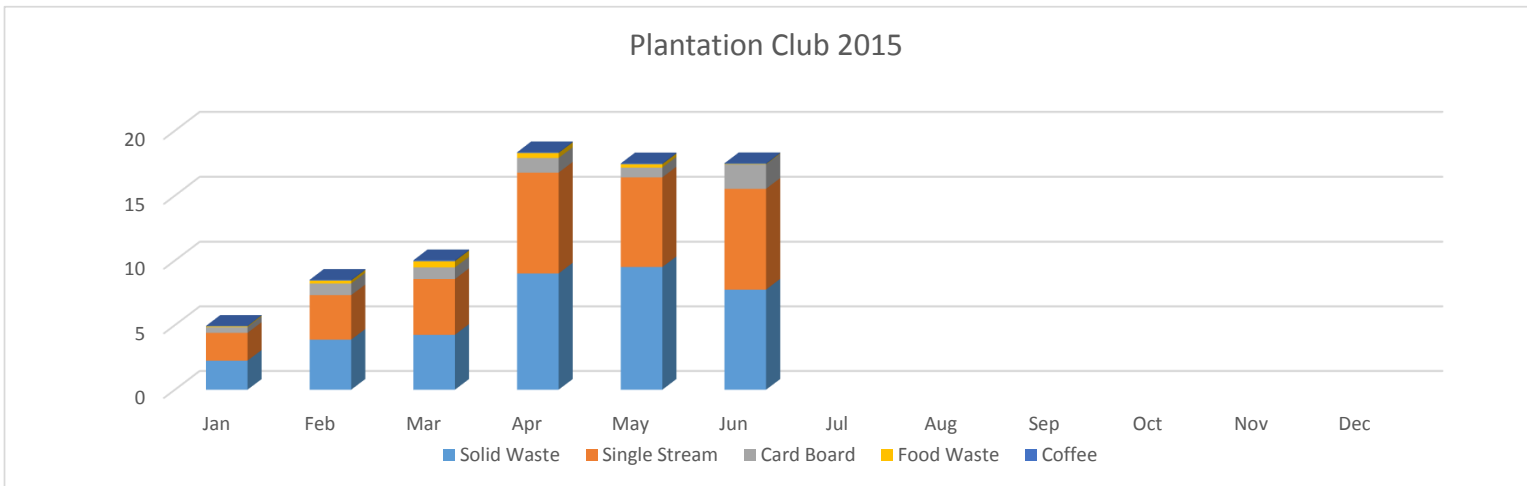
Welcome Center 2015

	Solid Waste	Single Stream	Card Board	Paper	Coffee	Ewaste	Total Tons
Jan	0.1	0.3	0.14	0.365	0.01		0.915
Feb	0.089	0.56	0.21	0.423	0.01		1.292
Mar	0.11	0.78	0.213	0.426	0.01		1.539
Apr	0.078	0.56	0.276	0.46	0.01		1.384
May	0.1	0.56	0.31	0.36	0.01	1	2.34
Jun	0.078	0.78	0.36	0.605	0.01		1.833
Jul							0
Aug							0
Sep							0
Oct							0
Nov							0
Dec							0
<b>Total Tons</b>	<b>0.555</b>	<b>3.54</b>	<b>1.509</b>	<b>2.639</b>	<b>0.06</b>	<b>1</b>	<b>9.303</b>



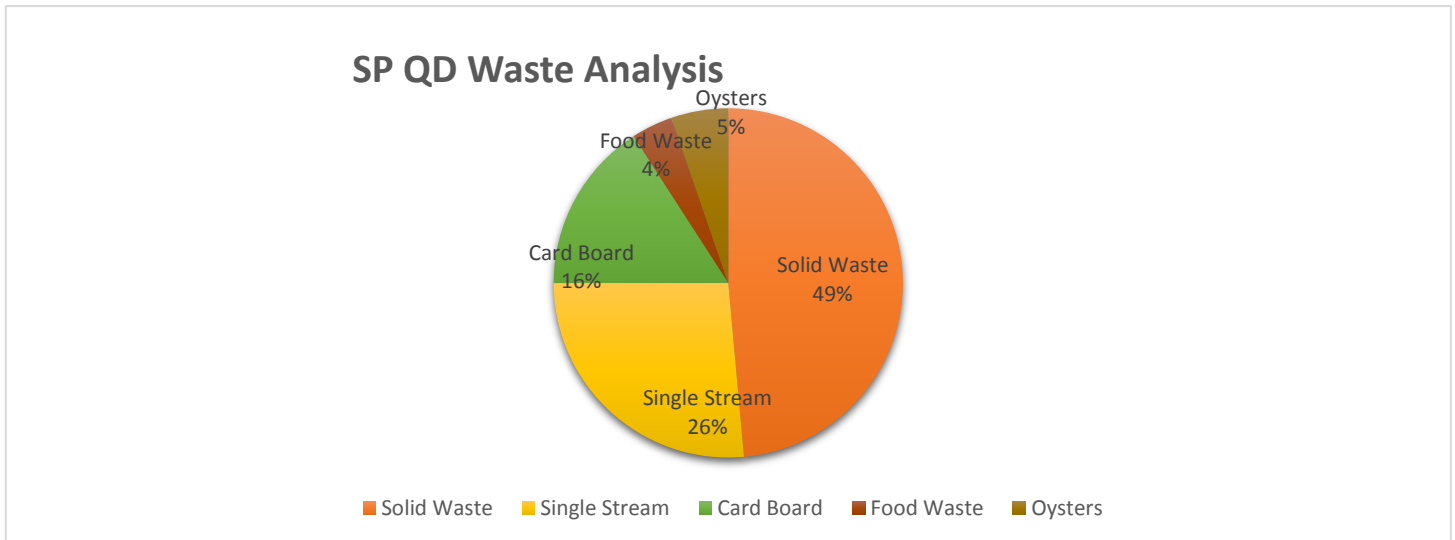
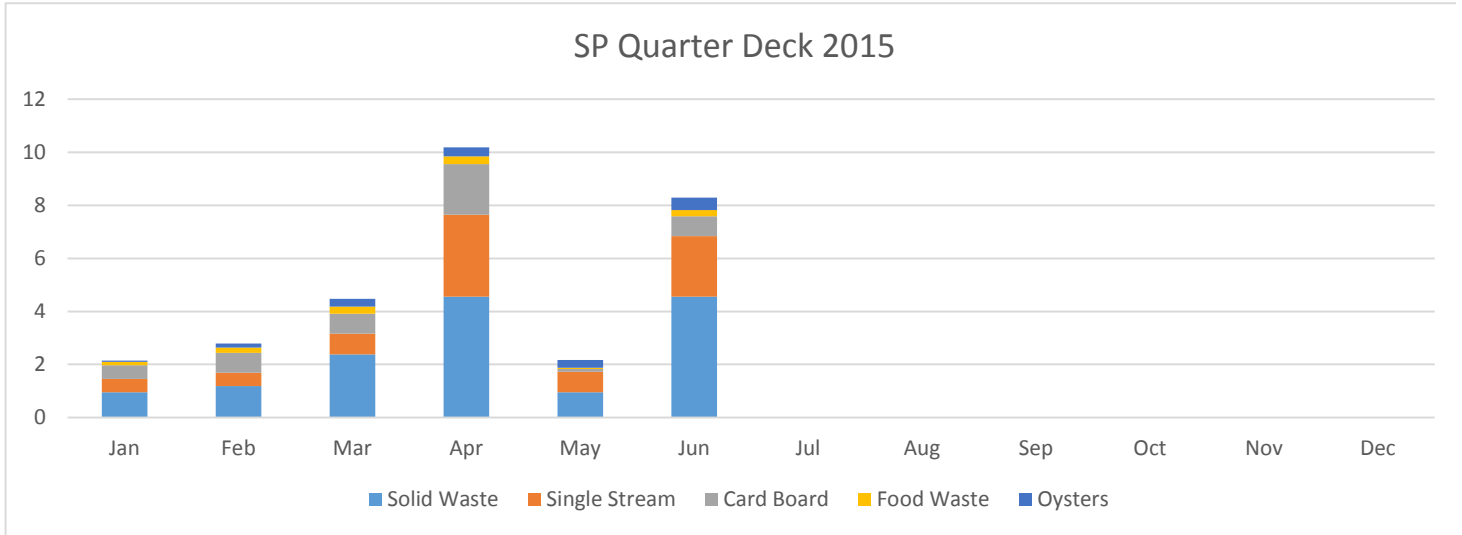
## Sea Pines Plantation Club 2015

	Solid Waste	Single Stream	Card Board	Food Waste	Coffee	Oysters	Total Tons
Jan	2.25	2.15	0.45	0.065	0.03		4.945
Feb	3.875	3.45	0.9	0.23	0.06	0.048	8.563
Mar	4.25	4.32	0.9	0.48	0.077	0.16	10.187
Apr	9	7.776	1.125	0.384	0.06	0.19	18.535
May	9.5	6.912	0.75	0.264	0.06	0.095	17.581
Jun	7.75	7.776	1.875	0.036	0.06	0.218	17.715
Jul							0
Aug							0
Sep							0
Oct							0
Nov							0
Dec							0
<b>Total Tons</b>	<b>36.625</b>	<b>32.384</b>	<b>6</b>	<b>1.459</b>	<b>0.347</b>	<b>0.711</b>	<b>77.526</b>



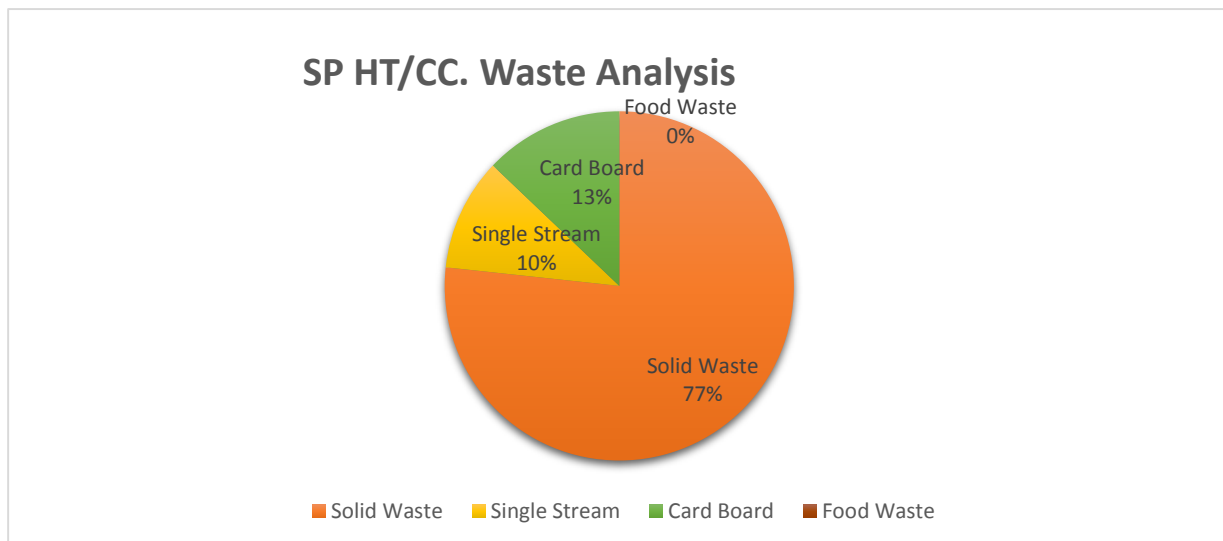
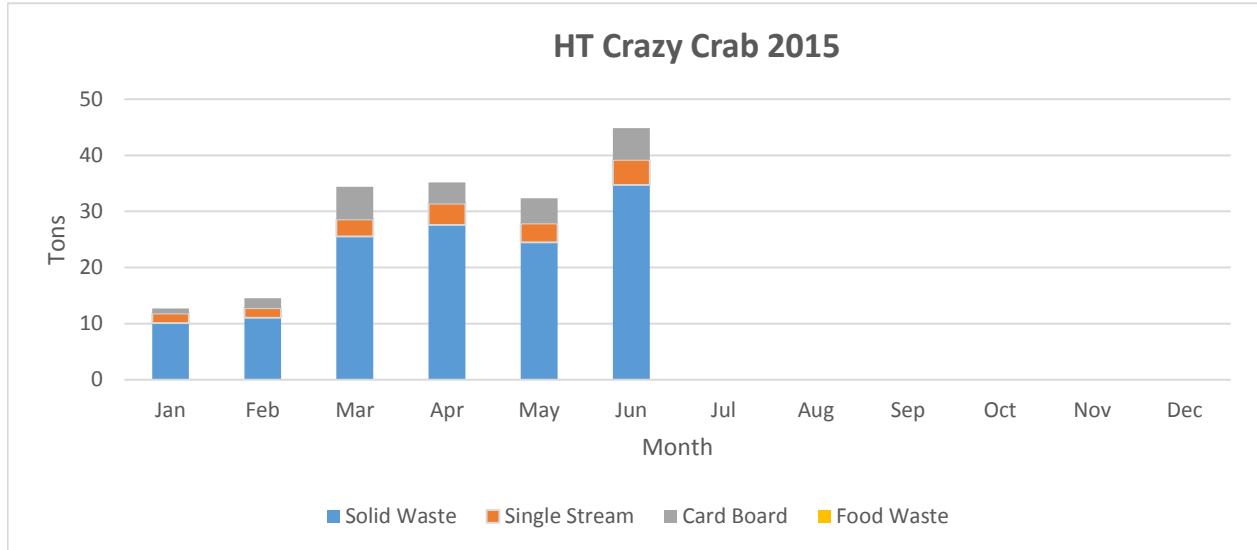
## Sea Pines Quarter Deck 2015

	Solid Waste	Single Stream	Card Board	Food Waste	Oysters	Total Tons
Jan	0.95	0.5	0.525	0.12	0.048	2.143
Feb	1.19	0.5	0.75	0.192	0.152	2.784
Mar	2.38	0.787	0.75	0.26	0.294	4.471
Apr	4.56	3.09	1.9	0.3	0.33	10.18
May	0.95	0.78	0.1	0.05	0.29	2.17
Jun	4.56	2.28	0.75	0.227	0.475	8.292
Jul						0
Aug						0
Sep						0
Oct						0
Nov						0
Dec						0
<b>Total Tons</b>	<b>14.59</b>	<b>7.937</b>	<b>4.775</b>	<b>1.149</b>	<b>1.589</b>	<b>30.04</b>



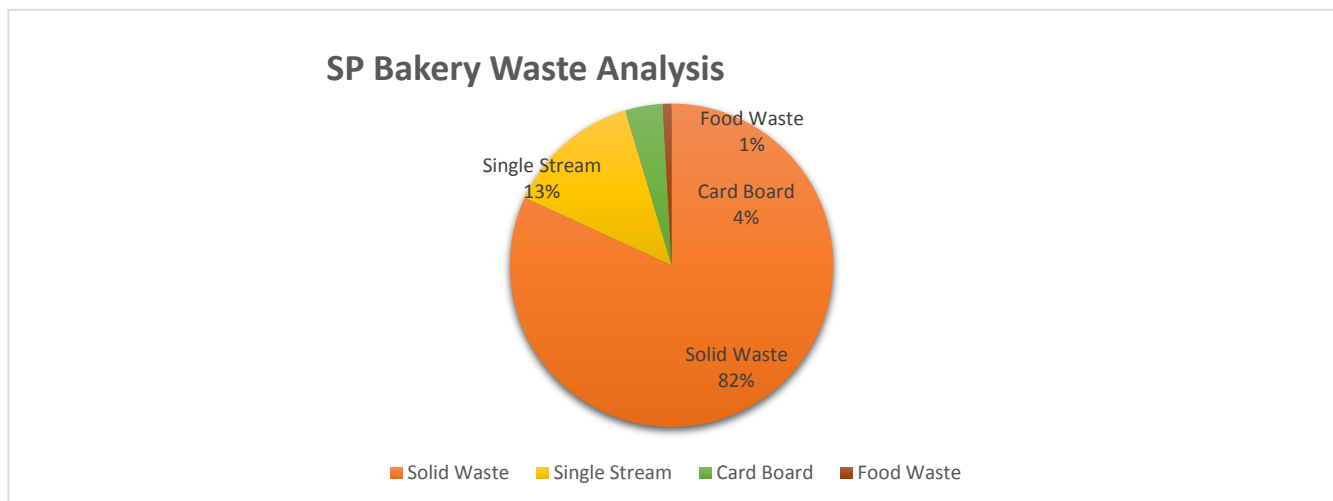
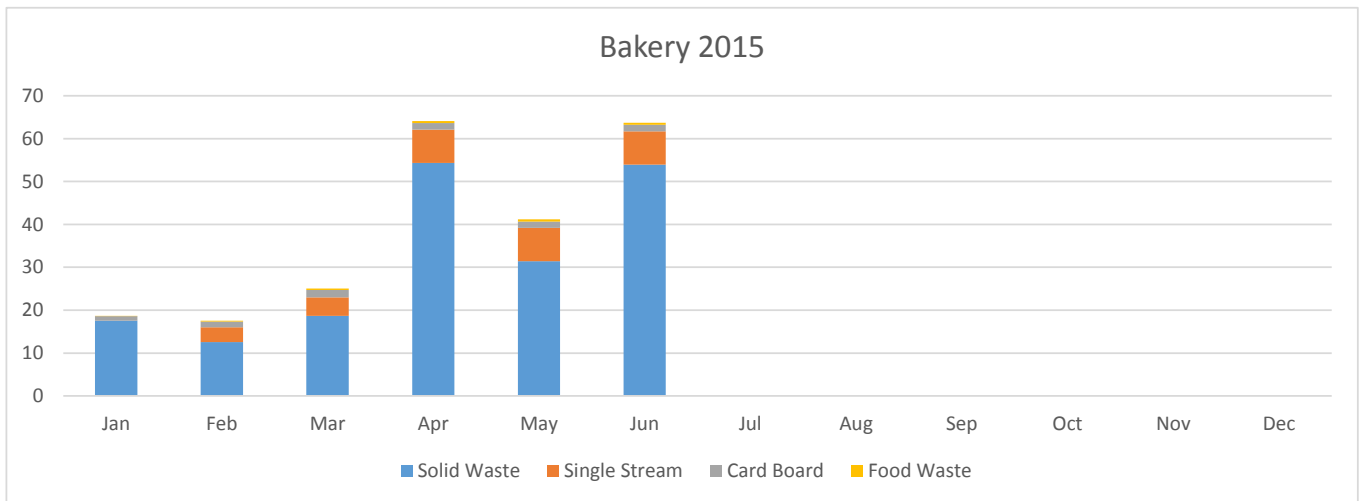
## Sea Pines Harbour Town/Crazy Crab 2015

	Solid Waste	Single Stream	Card Board	Food Waste	Total Tons
Jan	10.08	1.74	0.9		12.72
Feb	11.07	1.669	1.8		14.539
Mar	25.52	3.04	5.85		34.41
Apr	27.56	3.83	3.75		35.14
May	24.49	3.35	4.5		32.34
Jun	34.73	4.494	5.62		44.844
Jul					0
Aug					0
Sep					0
Oct					0
Nov					0
Dec					0.015
<b>Total Tons</b>	<b>133.45</b>	<b>18.123</b>	<b>22.42</b>	<b>0</b>	<b>174.008</b>



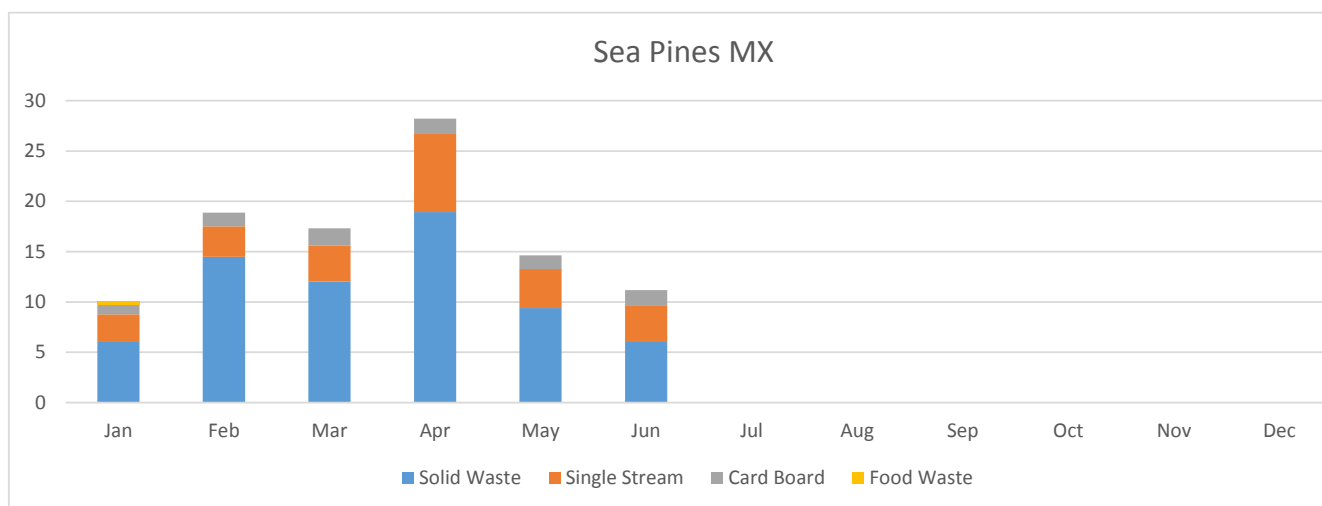
## Sea Pines Bakery 2015

	Solid Waste	Single Stream	Card Board	Food Waste	Coffee	Total Tons
Jan	17.57	0	1.004	0.104	0.35	18.678
Feb	12.55	3.456	1.339	0.21	0.28	17.555
Mar	18.65	4.32	1.73	0.32	0.28	25.02
Apr	54.36	7.776	1.507	0.44	0.42	64.083
May	31.39	7.776	1.507	0.48	0.31	41.153
Jun	53.95	7.776	1.507	0.488	0.495	63.721
Jul						0
Aug						0
Sep						0
Oct						0
Nov						0
Dec						0
<b>Total Tons</b>	<b>188.47</b>	<b>31.104</b>	<b>8.594</b>	<b>2.042</b>	<b>2.135</b>	<b>63.721</b>

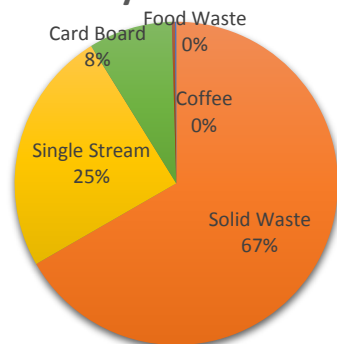


Solid Waste Logs 2015  
 Sea Pines MX 2015

	Solid Waste	Single Stream	Card Board	Food Waste	Coffee	Total Tons
Jan	6.03	2.75	1.004	0.33	0.02	10.134
Feb	14.48	3.05	1.339		0.02	18.889
Mar	12.02	3.56	1.73		0.02	17.33
Apr	18.92	7.776	1.51		0.02	28.226
May	9.4	3.88	1		0.02	14.639
Jun	6.12	3.56	1.503		0.02	11.203
Jul						0
Aug						0
Sep						0
Oct						0
Nov						0
Dec						0
<b>Total Tons</b>	<b>66.97</b>	<b>24.576</b>	<b>8.425</b>	<b>0.33</b>	<b>0.12</b>	<b>100.421</b>



SP MX Waste Analysis



■ Solid Waste   
 ■ Single Stream   
 ■ Card Board   
 ■ Food Waste   
 ■ Coffee



## Sea Pines HT Conference Center 2015

	Solid Waste	Single Stream	Card Board	Food Waste	Total Tons
Jan	2.25	0.508	0.25	0.092	3.1
Feb	2.5	1.67	1.25	0.245	5.665
Mar	2.72	2.11	0.75	0.339	5.919
Apr	12	12.5	3	1.5925	28.9675
May	7.375	6.75	1.875	1.35	17.35
Jun	4.375	3.03	2.25	1.498	11.153
Jul					0
Aug					0
Sep					0
Oct					0
Nov					0
Dec					0
<b>Total Tons</b>	<b>31.095</b>	<b>26.568</b>	<b>9.375</b>	<b>5.1165</b>	<b>72.1545</b>

